



QUESTIONS AND ANSWERS

CLEANING IS MADE EASY WITH SPÜLBOY®.

**SPÜLBOY® installation the device**

How much water pressure do I need?	1
How can I clean clogged rinsing holes?	3
How do I connect the SPÜLBOY®?	5
Why is my easy clix®-connection leaking?	7
How do I handle a general defect?	9
How do I exchange the head valve?	11

SPÜLBOY® glass washing process

Why should I use glass washing tablets?	13
When do I need a new tablet?	15
How do I optimally clean the glasses?	17
Which brush suits to which glass type?	19
What are the advantages of the 2-step rinse?	21
How do I ensure fresh water?	23

SPÜLBOY® device & brush cleaning

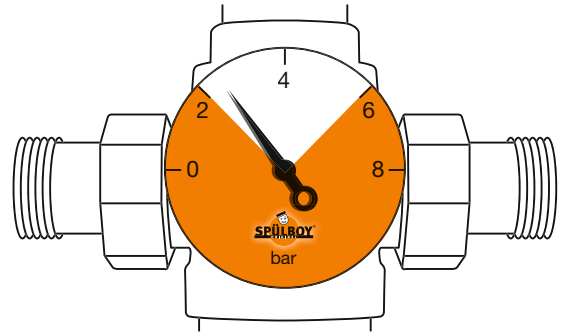
How should I lift the SPÜLBOY® out of the sink?	25
How should I remove the middle brush for cleaning?	27
How can I clean and care for the brushes?	29
How can I clean my SPÜLBOY® device?	31
When do I need new brushes?	33

Summary of benefits	35
----------------------------------	----

How much water pressure do I need?

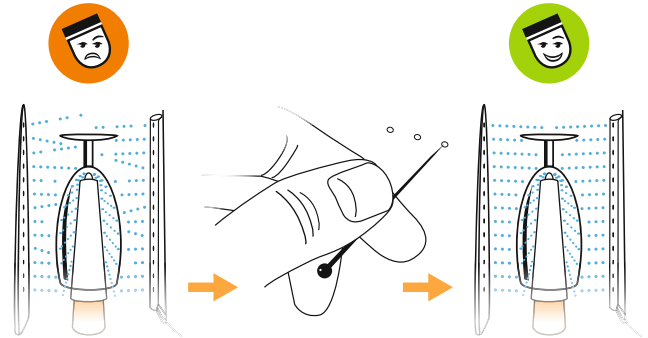
The water pressure should be at least 2 or better 3 bar to guarantee a powerful rinse and fresh water supply in the pre-rinse pot. The maximum pressure should be max. 6 bar to avoid higher wear.

Tip: The optimum water pressure can be identified by the rinse. The water jet from the outside flush should reach the glass horizontal and adequate to fresh the glass firmly.



How can I clean clogged rinsing holes?

Purge them! Check the horizontal water jet regularly and in case of a distorted and/or sloping picture get the pinholes with a small needle or likewise cleaned up from inside and give them again a good and straight direction for the jet to cover the glass appropriately.

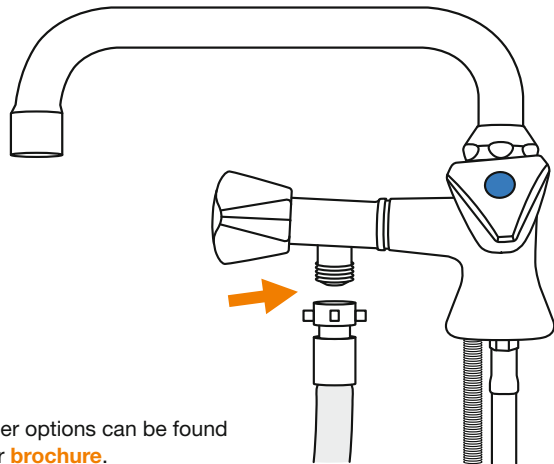


How do I connect the SPÜLBOY®?



Place the SPÜLBOY® in the counter basin and turn the wing nut of the water inlet hose onto the appropriate underflow tap of the water fitting.

Tip: Please make sure that the seal on the water connection is seated correctly.

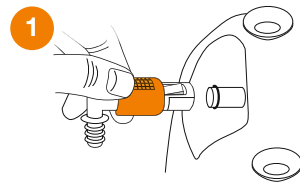


Further options can be found
in our [brochure](#).

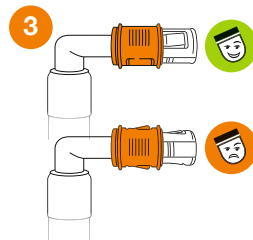
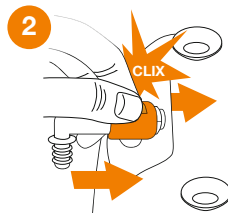
Why is my easy clix[®] connection leaking?



Make sure that the sealing ring is correctly fitted on the locking pin of the device. Move the orange safety slide on the connection hose backwards (off) and push the connection hose completely onto the inlet.



Now push the orange safety slide forward until you hear a „clix“.



Make sure that the safety slide on the hose is not twisted.

How do I handle a general defect?

If the SPÜLBOY® should indicate a defect, you can send us the device with error description and contact data to the following address:

Schäfer Produkte GmbH
Reparaturabteilung, Simonshöfchen 53, 42327 Wuppertal

After receipt and inspection of the device, we will return the repaired device to you with warranty or goodwill. In case of repair costs we will send you our cost estimate.

Tip: If you are unsure whether the device is repairable or whether you can carry out the repair yourself, please call us or write us an e-mail with a description of the error and photos.



send in



+ invoice



repair

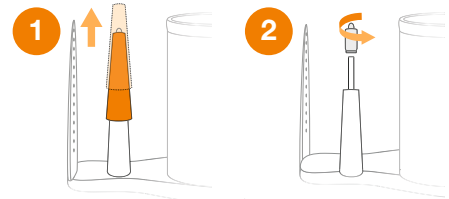


return

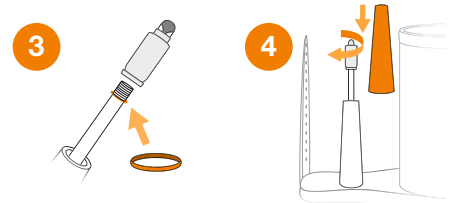


How do I exchange the head valve?

Turn off the water pressure and pull the glass protection over the head valve with a strong pull. Unscrew the head valve from the valve pipe and check that the sealing ring is under the thread.



If not, replace the sealing ring and screw the new head valve onto the valve stem and put the glass protection over the head valve.

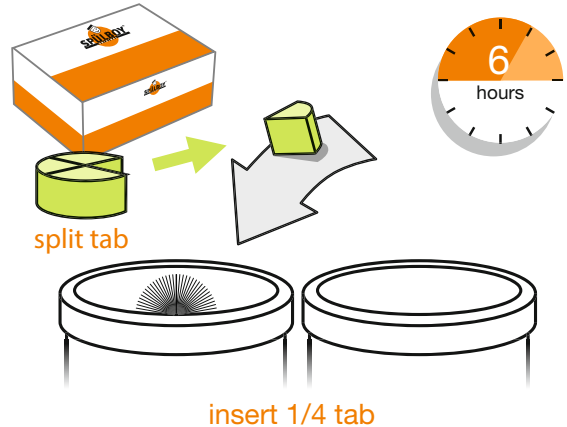


Tip: Soak the glass protector in warm water to make it more flexible before taking up again.

Why should I use glass washing tablets?

With our SPÜLBOY® glass rinsing tablets, we guarantee 100% bacteria-free and 99.9% virus-free rinsing results. The use of rinsing tablets as opposed to liquid rinsing agents has the advantage that the tablet is located in the pre-rinsing area and thus continuously ensures the release of the cleaning concentrate.

For best beer foam-friendly washing results!

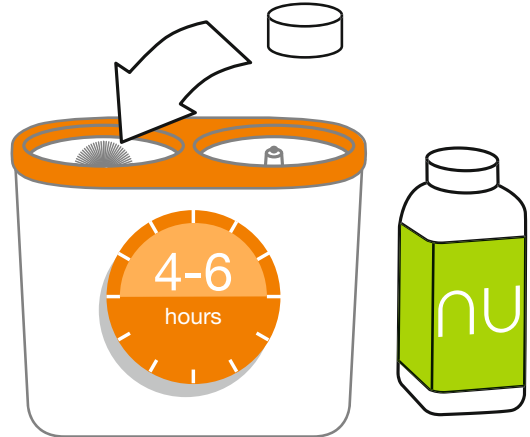


When do I need a new tablet?



You can rinse approximately for 4 hours with one SPÜLBOY® tablet. If there is **no foam** building while washing the glass, it is the sign that the soap is out and you need to place a new cleaning tablet into the washing canister.

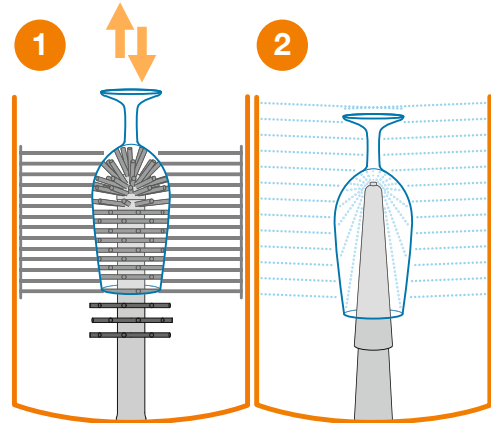
Tip: One NU® tab (white) ranges up to max. 6 hours. Using our Classic Tabs (green), **one quarter** of the tablet is enough.



How do I optimally clean the glasses?

It's simple! Push the glass firmly and completely 3-4 times over the middle brush with a steady up and down movement. Then you rinse the glass with fresh water inside and outside for 2-3 seconds in the rinse base unit. Ready!

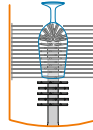
Tip: In order to cope with high crowds you may pre-clean the next glass while the first glass is still being rinsed.



Which brush suits to which glass type?



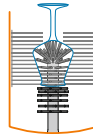
CLASSIC
NU



Standard brush-combination

- standard brush stripe
- middle brush with head
- ideal for all kind of standard glass types

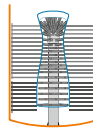
CLASSIC
NU



Shorter middle brush with big head

- standard brush stripe
- short middle brush with big head
- ideal for all kind of standard glass types – special spherically rounded like Craft Beer glasses

CLASSIC
NU



Middle brush with big head and 2nd brush stripe

- standard brush stripe and 2nd brush stripe
- middle brush with big head
- specialized for high and deep glasses like wheat beer glasses

NU



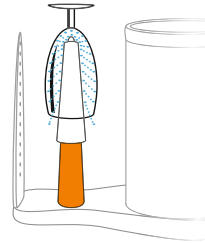
NU® brush set XL

- brush stripe XL and 2nd brush stripe
- middle brush XL with big head
- specially developed for beer mugs and handle glasses with inside diameter > 8cm

What are the advantages of the 2-step rinse?



Our patented 2-step head valve system allows to clean glasses separately from the inside or from the inside and outside.

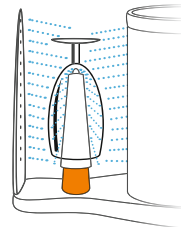


STEP ONE:

All flushed out!

Our head valve guarantees perfect fresh and cold water to ensure hygienically perfect inside glass rinsing.

Ideally for 100% beer taste and foam by tapping beer into a freshened up cold & wet glass.



STEP TWO:

Double flushing force!

Whether double ring shower or spray arms, our rinse aid cleans all glasses from the inside and outside – for all-round hygiene during standard rinsing step.

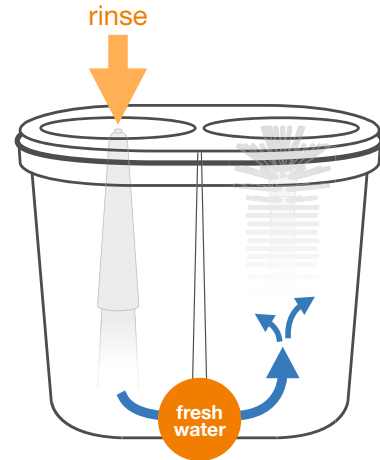
Our flexible telescopic rinsing system takes every glass including handle and foot easily and most elegantly.

How do I ensure fresh water ?



Automatically! The fresh water supply is triggered during the rinsing process. This guarantees a constantly good and fresh water quality.

Tip: The NU® water+ allows you to refill on demand and quickly the pre-rinse pot with new fresh water by pushing the extra button, as much and as long as you want.

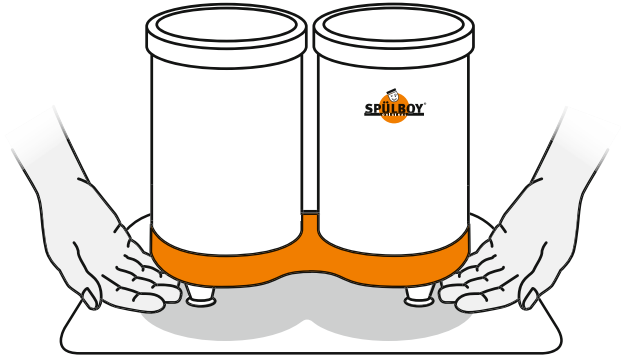


How should I lift the SPÜLBOY® out of the sink?



Very easily! Grab with both hands under the device and remove it smoothly from the basin at the base.

Avoid pulling on the top of the can or via the middle brush!



How should I remove the middle brush for cleaning?



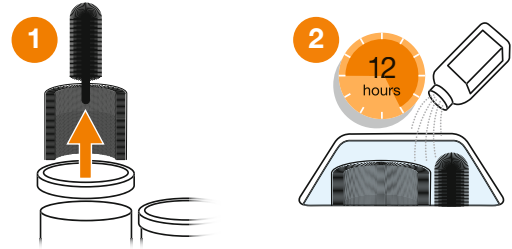
Uncomplicated! The middle brush can be removed by turning it half a turn to the left and simply pulling it up.

Tip: Please be careful **not to overtighten** the brush to avoid breaking the bayonet lock.



How can I clean and care for the brushes?

Daily! Remove the brushes from the SPÜLBOY® and place them in a sink or bucket of warm water. Now add the brush cleaner and let it work for 8-12 hours.



Then (next morning) rinse the brushes strong and firmly with clear water and place them back into your SPÜLBOY®.

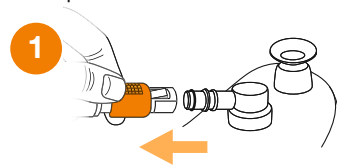


Tip: First remove the bumper ring to make it easier to remove the brushes.

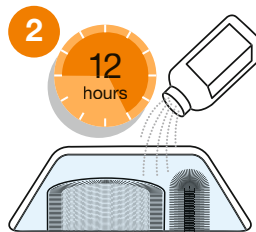
How can I clean my SPÜLBOY® device?



Daily! Please take the SPÜLBOY® off the water pressure and let the water drain out of the pre-rinse canister.



Clean the brushes with our brush cleaner and wipe the device and housing. The closed base guarantees hygiene and comfort.



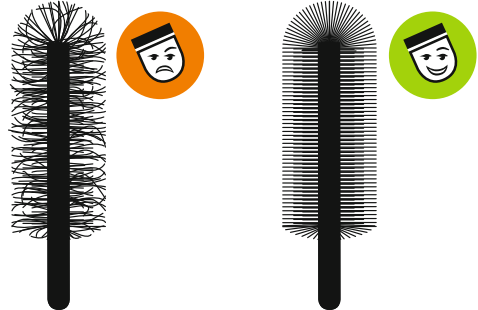
Tip: Our NU® models are dishwasher safe up to 70°C, the Classic devices up to 60°C.

When do I need new brushes?

Depending on the company and work application! Brush strips should be renewed after approx. 1/2-1 year.

If the bristles no longer straighten and the cleaning result deteriorates, the brushes should be replaced. Since the brush head is the most stressed, it can be replaced inexpensively every 3-4 months.

Tip: Our brush cleaner disinfects, cleans and cares for the bristles and thus ensures a longer service life of the brushes.



Why does the SPÜLBOY® clean my glasses optimally?



SPÜLBOY® can do more

- ✓ **We provide 100% clean glasses.**
 - perfect and comprehensive solutions for your glass cleaning
 - modern and most sustainable washing technology
 - engineering, production and assembling in Germany
- ✓ **Your guests are satisfied.**
 - clean glasses and 100% hygiene is what we offer and your guests deserve
 - highly effective organic SPÜLBOY® tabs remove up to 99.9% E. coli and Pseudomonas bacteria and herpes HSV type 1 viruses
 - tested by several independent institutions and national authorities
- ✓ **You can be sure.**
 - separate pre-rinsing and rinsing with the patented 2-stage system
 - automatic fresh water refilling of the pre-wash bucket set off by the 2nd rinse step
 - certified as the only manual glass washing system according to DIN 6653-3



Schäfer Produkte GmbH
Simonshöfchen 53
42327 Wuppertal/Germany
Tel: +49 (0) 202 695 32-0
E-Mail: info@spuelboy.de
www.spuelboy.de